

Touch Bar Exit Device

Vertical - Latching

Application

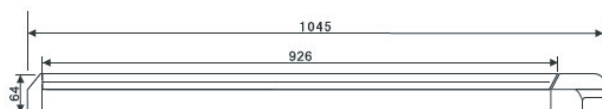
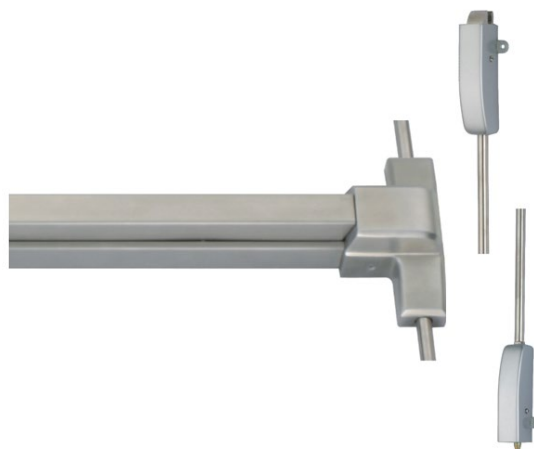
- For emergency and fire resistant exit doors
- Suitable for wood and metal, single or double door set

Specification

- Touch bar exit hardware, vertical, two point latching
- Standard length 1045mm can be reduced to minimum door width of 650mm
- Standard vertical rods suit door height of 2200mm
- Standard size suits door thickness up to 50mm special order for thicker doors is possible.

Features

- Reversible for right or left hand doors
- Steel with silver painted finish and stainless steel with satin or polished finish
- Lockable outside access handle optional to be ordered separately



EN 1125:2008 classification

3	7	6	B	4	2	1	2	2	B	C
---	---	---	---	---	---	---	---	---	---	---

Product code	Description	Finish
ED-U-8007-P-SIL	Touch bar, vertical, steel, painted finish	Silver
ED-U-8007-S-SSS	Touch bar, vertical, stainless steel, satin	SSS
ED-U-8007-S-PSS	Touch bar, vertical, stainless steel, polish	PSS

