

Touch Bar Exit Devices

Mortice Type

Application

- For emergency and fire resistant doors
- Suitable for wood and metal, single door set

Specification

- Touch bar exit hardware with single point mortice lock
- Certified to European standard EN1125:2008
- Tested to 200,000 cycles
- Powder coated paint finish

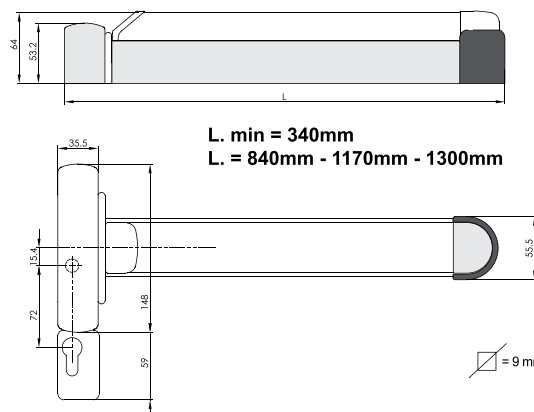
Features

- Reversible for right or left hand doors
- Touch bar standard length 840mm
other sizes of bar and rods available on request
- Silver painted other colours available on request
- Includes outside access handle*



EN 1125:2008 classification

3	7	7	B	1	4	2	2	B	A
---	---	---	---	---	---	---	---	---	---



Product code	Size	Finish
711K/1G7/VEK	Touch bar kit with mortice lock	Silver



* Euro profile cylinder not included to be ordered separately