



HINGES

Ball Bearing Hinges

CE Certified

Application

- For wood and metal* doors
- Suitable for exposed sea front installations

Specification

- Stainless steel AISI grade 304
- Two ball bearings, five knuckles and fixed pin
- Conforms to EN 1935:2002 class 13

Features

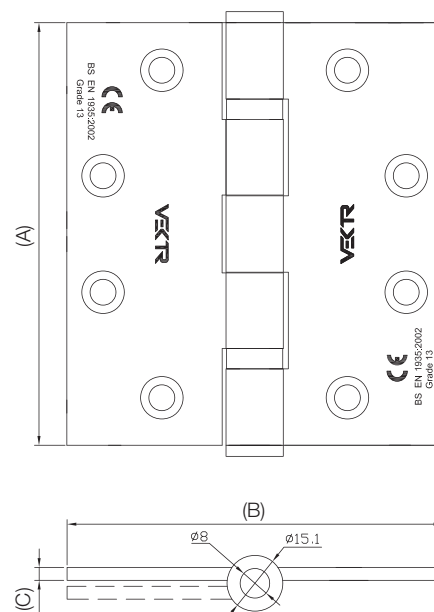
- Brushed stain finish as standard polished and PVD finishes available on request
- Suitable for doors upto 120 kg



Product code	Size (A x B x C)	Finish
HN-24-403030-SSS	102 x 76 x 3mm	Satin stainless steel
HN-24-403530-SSS	102 x 89 x 3mm	Satin stainless steel
HN-24-404030-SSS	102 x 102 x 3mm	Satin stainless steel
HN-24-454030-SSS	114 x 102 x 3mm	Satin stainless steel
HN-24-454530-SSS	114 x 114 x 3mm	Satin stainless steel
HN-24-454035-SSS**	114 x 102 x 3.5mm	Satin stainless steel
HN-24-454535-SSS	114 x 114 x 3.5mm	Satin stainless steel

* hinges supplied with wood fixing screws unless specified

**supplied with metal fixings as standard



EN 1935:2002



FIRE

Ball Bearing Hinges

UL Listed

Application

- For wood and metal* doors
- Suitable for exposed sea front installations

Specification

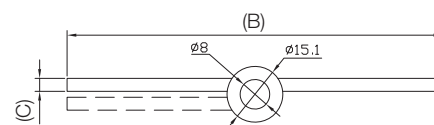
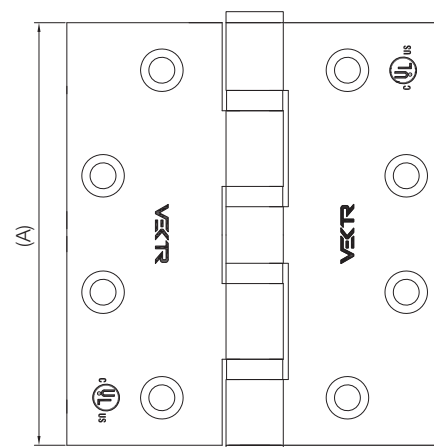
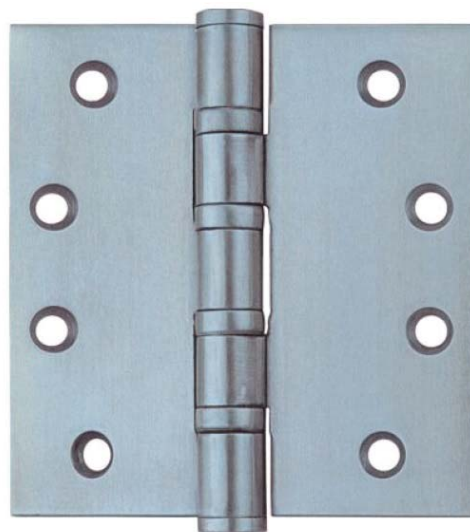
- Stainless steel AISI grade 304
- Fourball bearings for extra heavy duty application
- Conforms to American fire standard

Features

- Brushed satin finish as standard polished and PVD finishes available on request
- Option of non-removable pin (NR)

Product code	Size (A x B x C)	Finish
HN-44-454046-SSS	114 x 102 x 4.6mm	Satin stainless steel
HN-44-454046-SSS	114 x 102 x 4.6mm	Satin stainless steel

*supplied with metal fixings as standard



Concealed Ball Bearing Hinge

Specification and Features

- Stainless steel AISI Grade 304
- For wood and metal* doors
- Knuckle Ø14mm
- Concealed ball bearings
- Brushed satin finish as standard
other finishes on request

Product code	Size	Finish
HN-2C4-403030-SSS	102 x 76 x 3mm	Satin stainless steel

* hinges supplied with wood fixing screws unless specified



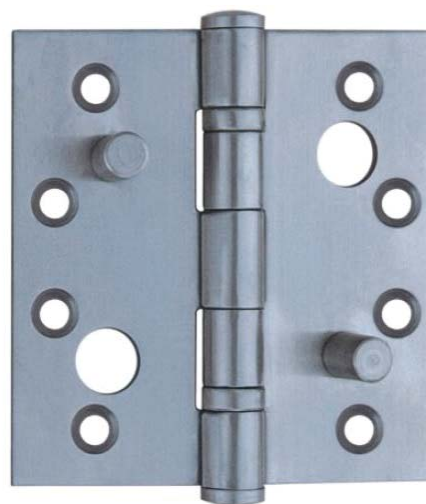
Security Hinge

Specification and Features

- Stainless steel AISI Grade 304
- For wood and metal* doors
- Two ball bearings, knuckle Ø14mm
- High resistance security studs
- Brushed satin finish as standard
other finishes on request

Product code	Size	Finish
HN-24-403030-XT-SSS	102 x 76 x 3mm	Satin stainless steel

* hinges supplied with wood fixing screws unless specified



Rising Hinge

Specification and Features

- Stainless steel AISI Grade 304
- For wood and metal* doors
- Brushed satin finish as standard
other finishes on request

Product code	Size	Finish
HN-RHR-403030-SSS	102 x 76 x 3mm	Satin stainless steel
HN-RHL-403030-SSS	102 x 76 x 3mm	Satin stainless steel

* hinges supplied with wood fixing as standard metal fixing should be specified on order



Lift Off Hinge

Specification and Features

- Stainless steel AISI Grade 304
- For wood and metal* doors
- Brushed satin finish as standard
other finishes on request

Product code	Size	Finish
HN-LO-403530-SSS	102 x 89 x 3mm	Satin stainless steel
HN-LO-404030-SSS	102 x 102 x 3mm	Satin stainless steel

* hinges supplied with wood fixing as standard metal fixing should be specified on order



Spring Hinge - Single Action

Specification and Features

- For wood doors
- For single action doors
- Stainless steel AISI Grade 304
- Adjustable spring tension
- Brushed satin finish

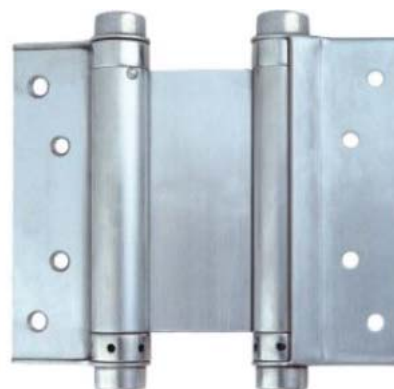


Product code	Size	Finish
HN-SA09-04-SSS	4"	Satin stainless steel
HN-SA09-06-SSS	6"	Satin stainless steel

Spring Hinge - Double Action

Specification and Features

- For wood doors
- For double action doors
- Stainless steel AISI Grade 304
- Adjustable spring tension
- Brushed satin finish



Product code	Size	Finish
HN-DA09-04-SSS	4"	Satin stainless steel
HN-DA09-06-SSS	6"	Satin stainless steel



MORTICE LOCKS

FR Series

Sash Lock

Application

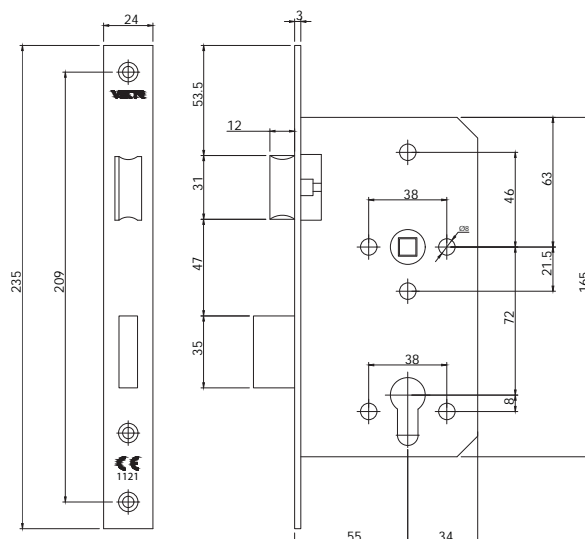
- For commercial applications
- Suitable for fire resistant doors

Specification

- DIN style mortice sash lock with 72mm centres
- 8mm square follower designed to grip the spindle
- Profiled stainless steel grade 304 latch
- Stainless steel grade 304 double throw deadbolt
- Stainless steel grade 304 front and strike plate
- Front plate dimensions 235 x 24 x 3mm

Features

- Reversible for right or left hand doors
- Standard backset 55mm
- Satin stainless steel finish - other finishes on request
- Latch operated by lever or cylinder
- Double throw deadbolt with 20mm projection (2 x 10mm)
- Suitable for through fixing handles
- Conforms to EN12209:2003



Product code	Description	Finish
LC-FR-7255-01-SSS	Heavy duty sash lock, 72x55mm	Satin stainless steel
LC-FR-7260-01-SSS	Heavy duty sash lock, 72x60mm	Satin stainless steel



EN 12209:2003



FIRE

FR Series

Deadlock

Application

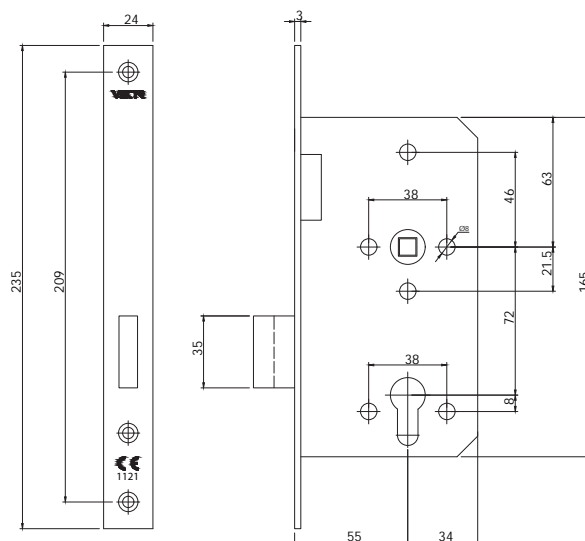
- For commercial applications
- Suitable for fire resistant doors

Specification

- DIN style mortice deadlock with 55mm centres
- Stainless steel grade 304 double throw deadbolt
- Stainless steel grade 304 front and strike plate
- Front plate dimensions 235 x 24 x 3mm

Features

- Reversible for right or left hand doors
- Satin stainless steel finish - other finishes on request
- Suitable for through fixing handles
- Conforms to EN12209:2003



Product code	Description	Finish
LC-FR-7255-02-SSS	Deadlock, 55mm backset	Satin stainless steel



EN 12209:2003



FIRE

FR Series

Latch Function

Application

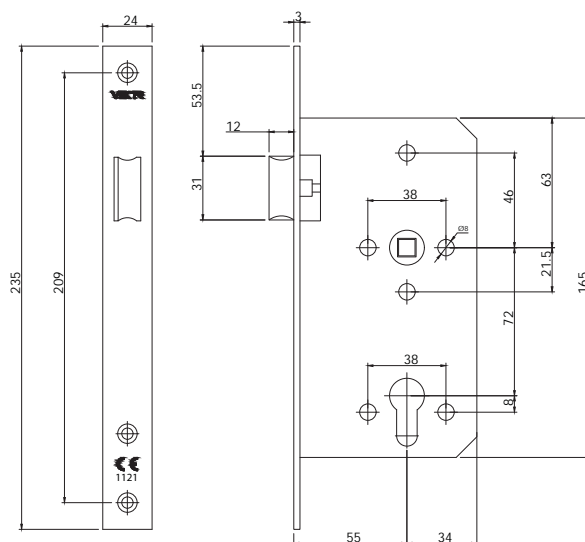
- For commercial applications
- Suitable for fire resistant doors

Specification

- DIN style mortice sash lock with 72mm centres
- 8mm square follower designed to grip the spindle
- Profiled stainless steel grade 304 latch
- Stainless steel grade 304 front and strike plate
- Front plate dimensions 235 x 24 x 3mm

Features

- Reversible for right or left hand doors
- Standard backset 55mm
- Satin stainless steel finish - other finishes on request
- Latch operated by lever or cylinder
- Suitable for through fixing handles
- Conforms to EN12209:2003



Product code	Description	Finish
LC-FR-7255-07-SSS	FR series latch, 55mm backset	Satin stainless steel
LC-FR-7260-07-SSS	FR series latch, 60mm backset	Satin stainless steel



EN 12209:2003



FIRE

FR Series

Bathroom Lock

Application

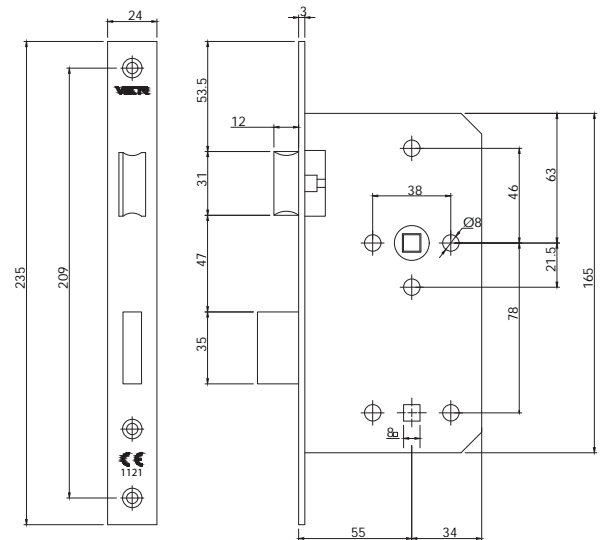
- For commercial applications
- Suitable for fire resistant doors

Specification

- DIN style mortice bathroom lock with 78mm centres
- 8mm square follower designed to grip the spindle
- Profiled stainless steel grade 304 latch
- Stainless steel grade 304 deadbolt
- Stainless steel grade 304 front and strike plate
- Front plate dimensions 235 x 24 x 3mm

Features

- Reversible for right or left hand doors
- Standard backset 55mm, 60mm on request
- Satin stainless steel finish - other finishes on request
- Latch operated by lever or cylinder
- Deadbolt with 20mm projection
- Suitable for through fixing handles
- Conforms to EN12209:2003



Product code	Description	Finish
LC-FR-7255-07-SSS	Bathroom lock, 55mm backset	Satin stainless steel
LC-FR-7260-07-SSS	Bathroom lock, 60mm backset	Satin stainless steel



EN 12209:2003



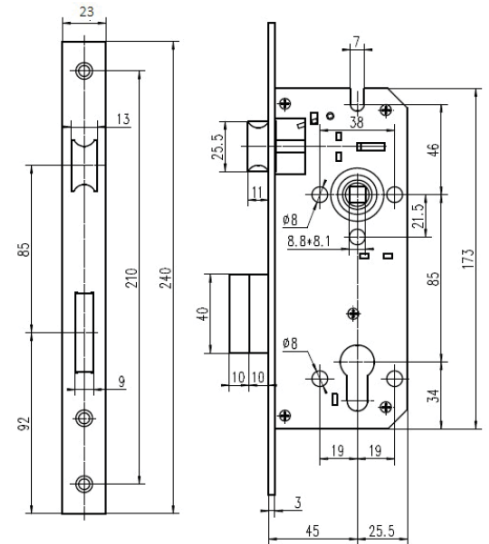
FIRE

Sash Lock

- For light commercial and residential applications
- Suitable for wooden doors

- Mortice sash lock, 85mm centres
- Backset 45mm
- Ball bearing follower
- Latch operation by lever or cylinder
- Double throw deadbolt
- Suitable for through fixing handles

- Reversible for right or left hand doors
- Satin nickel finish - other finishes on request



Product code	Description	Finish
LC-1B-8545-SN	Mortice Sash lock	Satin nickel

85mm series

Deadlock

Application

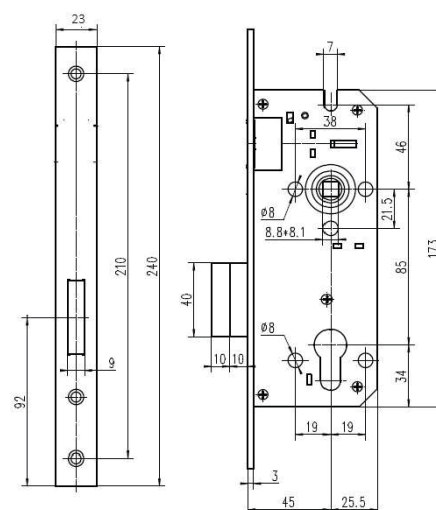
- For light commercial and residential applications
- Suitable for wooden doors

Specification

- Mortice deadlock, 45mm
- Operation by standard euro profile cylinder
- Double throw deadbolt 2 x 10mm
- Steel deadbolt

Features

- Reversible for right or left hand doors
- Satin nickel finish - other finishes on request



Product code	Description	Finish
LC-1B-8545-02-SN	Deadlock	Satin nickel

85mm series

Latch

Application

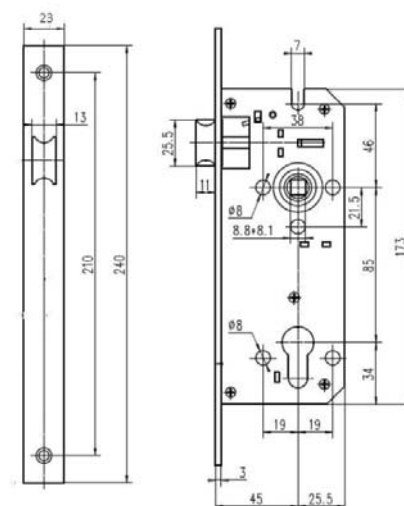
- For light commercial and residential applications
- Suitable for wooden doors

Specification

- Mortice latch backset 45mm
- Ball bearing follower
- Latch operation by lever and cylinder
- Suitable for through fixing handles

Features

- Reversible for right or left hand doors
- Satin nickel finish - other finishes on request
- Can also be used as a mortice night latch



Product code	Description	Finish
LC-1B-8545-04-SN	Motice Latch	Satin nickel

Multi-bolt

Sash Lock

Application

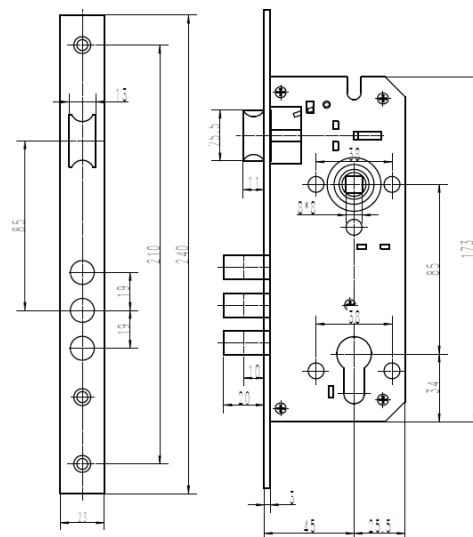
- For light commercial and residential applications
- Suitable for wooden doors

Specification

- Multi-bolt sash lock, 85mm centres
- Backset 45mm
- Ball bearing follower
- Latch operation by lever or cylinder
- Steel bolts, double throw

Features

- Reversible for right or left hand doors
- Suitable for through fixing handles, 38mm centres
- Satin nickel finish - other finishes on request



Product code	Description	Finish
LC-3B-8545-SN	Multi-bolt Sash Lock	Satin nickel

Multi-bolt

Deadlock

Application

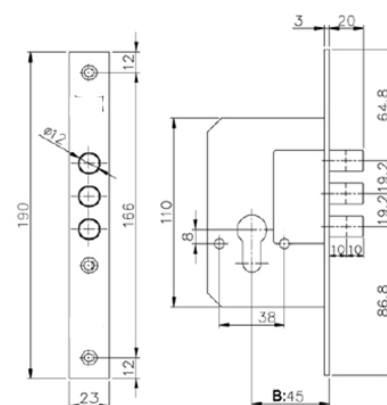
- For light commercial and residential applications
- Suitable for wooden doors

Specification

- Mortice deadlock
- Backset 45mm
- Three steel bolts, Ø12mm
- Double throw 2 x 10mm

Features

- Reversible for right or left hand doors
- Suitable for through fixing escutcheon, 38mm centres
- Satin nickel finish - other finishes on request



Product code	Description	Finish
LC-3B-0045-SN	Multi-bolt Mortice Deadlock	Satin nickel

Deadbolt

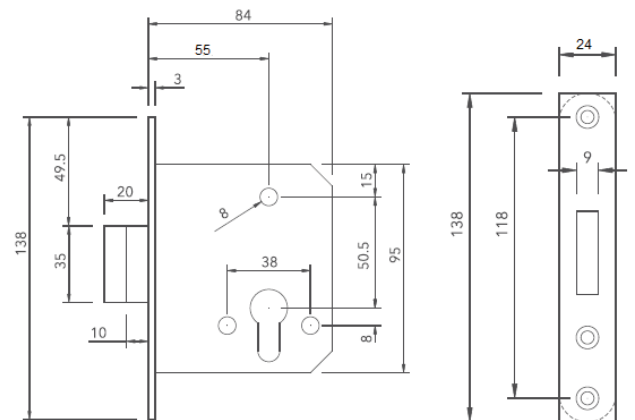
Specification

- Cylinder operated deadbolt
- Suitable for wood and metal doors
- Stainless steel deadbolt, front and strike plates

Features

- Prepared for through fixing escutcheons
- Reversible for right or left hand doors
- Satin stainless steel finish - other finishes on request

Product code	Finish
LC-SX-DC09-55-SSS	Satin stainless steel



Roller Latch

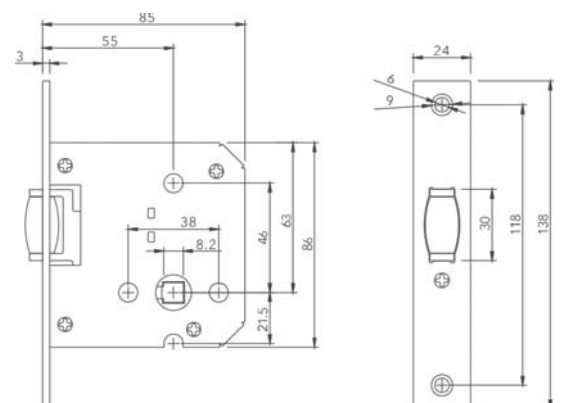
Specification

- Roller Latch
- Suitable for wood and metal doors
- Stainless steel roller, front and strike plates

Features

- Prepared for spindle and through fixing escutcheons
- Reversible for right or left hand doors
- Satin stainless steel finish - other finishes on request

Product code	Finish
LC-SX-R003-55-SSS	Satin stainless steel



Sliding Door Locks Cylinder Function

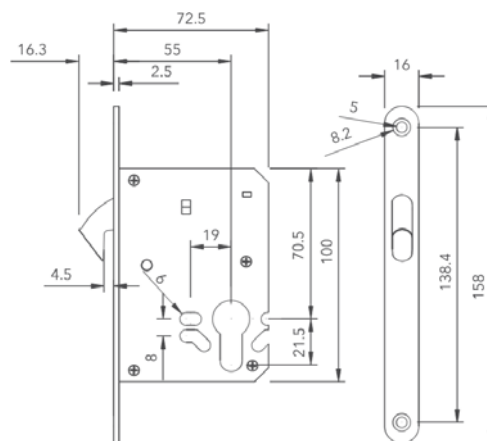
Specification

- Cylinder operated hook bolt
- Suitable for wood and metal doors
- Zinc alloy bolt
- Stainless steel front and strike plates

Features

- Prepared for through fixing escutcheons
- Reversible for right or left hand doors
- Satin stainless steel finish - other finishes on request

Product code	Finish
LC-SX-HC27-55-SSS	Satin stainless steel



Privacy Function

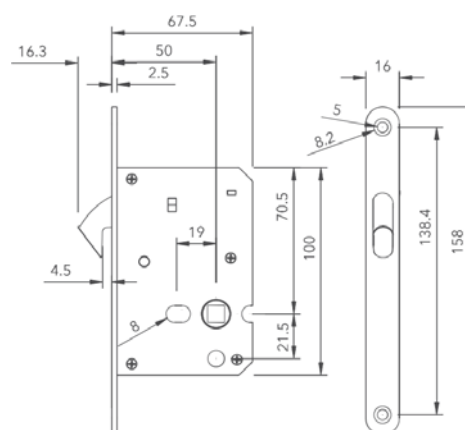
Specification

- Hook bolt operated by bathroom turn and indicator set
- Zinc alloy bolt
- Stainless steel front and strike plates
- Follower 8 x 8mm

Features

- Prepared for spindle and through fixing escutcheons
- Reversible for right or left hand doors
- Satin stainless steel finish - other finishes on request

Product code	Finish
LC-SX-H011-55-SSS	Satin stainless steel





CYLINDERS

Euro Profile Cylinder

Double – Key Both Sides

Part Description:

Euro profile double cylinder

Function:

Keys both side

Specifications:

- Brass housing, plug, pins and keys
- 6 pins, anti-drill and anti-pick pins

Features:

- Standard sizes 64mm and 70mm, other sizes on request
- Matt nickel finish, other finishes on request
- Keyed alike (KA) and master key (MK) suites possible

Article Number:

CYS-3232-KK-MN

Size:

32/32



Part Description:

Euro profile double cylinder

Function:

Keys both side

Specifications:

- Brass housing, plug, pins and keys
- 6 pins, anti-drill and anti-pick pins

Features:

- Standard sizes 64mm and 70mm, other sizes on request
- Matt nickel finish, other finishes on request
- Keyed alike (KA) and master key (MK) suites possible

Article Number:

CYS-3535-KK-MN

Size:

35/35

Euro Profile Cylinder

Double – Key and Turn

Part Description:

Euro profile cylinder key and turn

Function:

Key and turn

Specifications:

- Brass housing, plug, pins and keys
- 6 pins, anti-drill and anti-pick pins

Features:

- Standard sizes 64mm and 70mm, other sizes on request
- Matt nickel finish, other finishes on request
- Keyed alike (KA) and master key (MK) suites possible

Article Number:

CYS-3232-TK-MN

Size:

32/32



Part Description:

Euro profile cylinder key and turn

Function:

Key and turn

Specifications:

- Brass housing, plug, pins and keys
- 6 pins, anti-drill and anti-pick pins

Features:

- Standard sizes 64mm and 70mm, other sizes on request
- Matt nickel finish, other finishes on request
- Keyed alike (KA) and master key (MK) suites possible

Article Number:

CYS-3535-TK-MN

Size:

35/35

Euro Profile Cylinder

Single

Part Description:

Euro profile single cylinder

Function:

Key one side

Specifications:

- Brass housing, plug and pins
- 6 pins, plus anti-drill and anti-pick pins
- Single (half) cylinder

Features:

- Standard size 45mm (35/10) other sizes available on request
- Matt nickel finish, other finishes on request
- Keyed alike (KA) and master key (MK) suites possible

Article Number:

CYS-3510-KH-MN

Size:

35/10



Euro Profile Cylinder

Privacy / Bathroom

Part Description:

Euro profile cylinder turn only

Function:

Privacy / Bathroom

Specifications:

- Brass housing, plug and pins

Features:

- Standard sizes 64mm and 70mm, other sizes on request
- Matt nickel finish, other finishes on request

Article Number:

CYS-3232-BK-MN

Size:

32/32



Part Description:

Euro profile cylinder turn only

Function:

Privacy / Bathroom

Specifications:

- Brass housing, plug and pins

Features:

- Standard sizes 64mm and 70mm, other sizes on request
- Matt nickel finish, other finishes on request

Article Number:

CYS-3535-BK-MN

Size:

35/35

Euro Profile Cylinder

Double – Flat Dimple Key

Part Description:

Euro profile double cylinder

Function:

Key both sides

Specifications:

- Brass housing, plug and pins
- 6 pins, plus anti-drill and anti-pick pins
- Supplied with five brass keys

Features:

- Matt nickel finish, other finishes on request

Article Number:

CYF-3535-KK-MN

Size:

35/35



Part Description:

Euro profile cylinder and turn

Function:

Key and turn

Specifications:

- Brass housing, plug and pins
- 6 pins, plus anti-drill and anti-pick pins
- Supplied with five brass keys

Features:

- Matt nickel finish, other finishes on request

Article Number:

CYF-3535-TK-MN

Size:

35/35



HANDLES

Tubular Levers

Stainless Steel Levers on Round Rosette

Part Description:

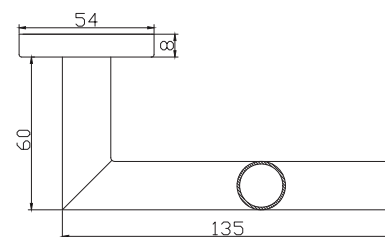
Tubular Stainless Steel
Levers on Round Rosette

Article Number:

LHT-RR-1002

Dimensions:

Length: 135mm



Part Description:

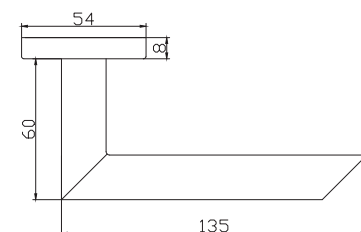
Tubular Stainless Steel
Levers on Round Rosette

Article Number:

LHT-RR-1003

Dimensions:

Length: 135mm



Part Description:

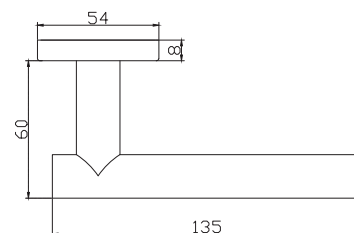
Tubular Stainless Steel
Levers on Round Rosette

Article Number:

LHT-RR-1010

Dimensions:

Length: 135mm



Part Description:

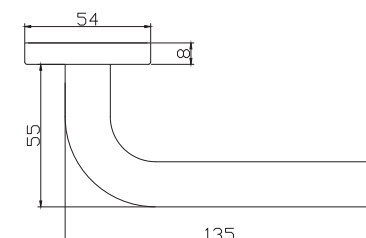
Tubular Stainless Steel
Levers on Round Rosette

Article Number:

LHT-RR-1004

Dimensions:

Length: 135mm



* All handles are of AISI Grade 304

Tubular Levers

Stainless Steel Levers on Round Rosette

Part Description:

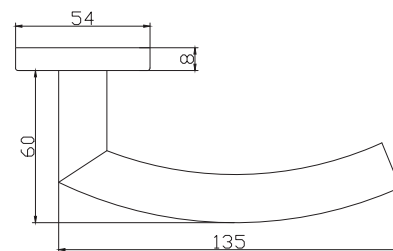
Tubular Stainless Steel
Levers on Round Rosette

Article Number:

LHT-RR-1005

Dimensions:

Length: 135mm



Part Description:

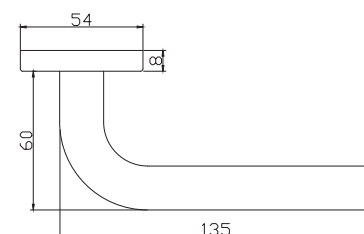
Tubular Stainless Steel
Levers on Round Rosette

Article Number:

LHT-RR-1013

Dimensions:

Length: 135mm



Part Description:

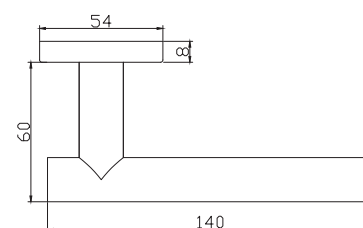
Tubular Stainless Steel
Levers on Round Rosette

Article Number:

LHT-RR-1007

Dimensions:

Length: 140mm



Part Description:

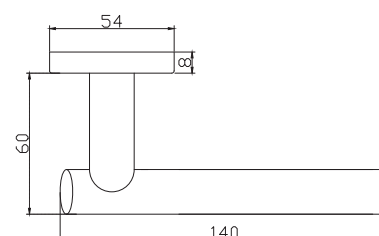
Tubular Stainless Steel
Levers on Round Rosette

Article Number:

LHT-RR-1008

Dimensions:

Length: 140mm



* All handles are of AISI Grade 304

Tubular Levers

Stainless Steel Levers on Round Rosette

Part Description:

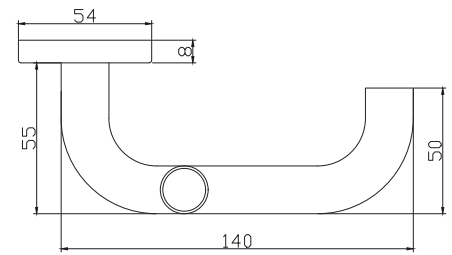
Tubular Stainless Steel
Levers on Round Rosette

Article Number:

LHT-RR-1001

Dimensions:

Length: 140mm



Part Description:

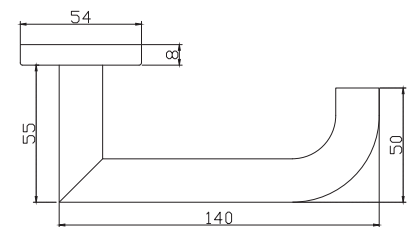
Tubular Stainless Steel
Levers on Round Rosette

Article Number:

LHT-RR-1018

Dimensions:

Length: 140mm



* All handles are of AISI Grade 304

Decorative Levers

Stainless Steel Levers on Round Rosette

Part Description:

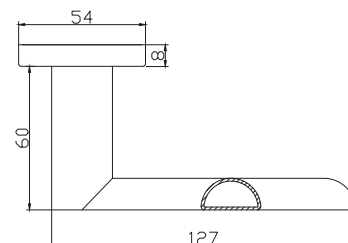
Decorative Stainless Steel
Levers on Round Rosette

Article Number:

LHU-RR-1504

Dimensions:

Length: 127mm



Part Description:

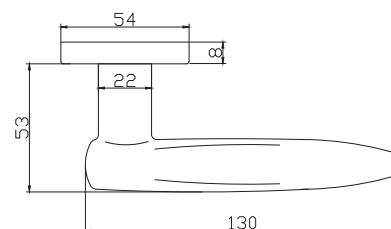
Decorative Stainless Steel
Levers on Round Rosette

Article Number:

LHU-RR-1514

Dimensions:

Length: 130mm



Part Description:

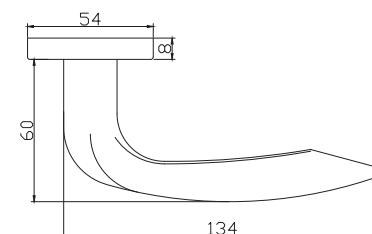
Decorative Stainless Steel
Levers on Round Rosette

Article Number:

LHU-RPR-1515

Dimensions:

Length: 134mm



Part Description:

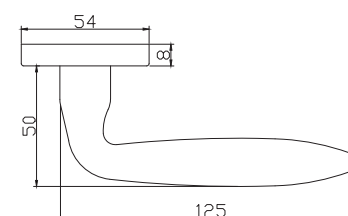
Decorative Stainless Steel
Levers on Round Rosette

Article Number:

LHU-RR-1513

Dimensions:

Length: 125mm



* All handles are of AISI Grade 304

Decorative Levers

Stainless Steel Levers on Round Rosette

Part Description:

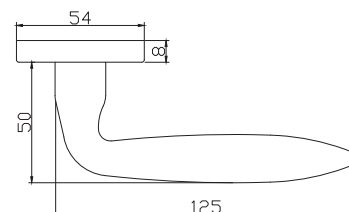
Decorative Stainless Steel
Levers on Round Rosette

Article Number:

LHU-RR-1521

Dimensions:

Length: 130mm



Part Description:

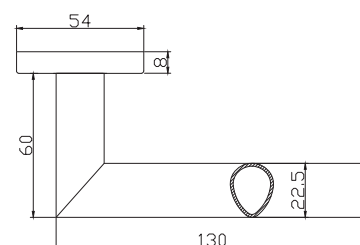
Decorative Stainless Steel
Levers on Round Rosette

Article Number:

LHU-RR-1524

Dimensions:

Length: 130mm



Part Description:

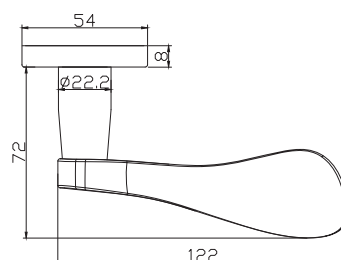
Decorative Stainless Steel
Levers on Round Rosette

Article Number:

LHU-RR-1531

Dimensions:

Length: 122mm



Part Description:

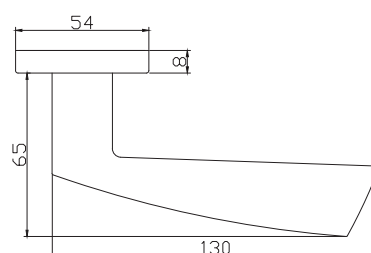
Decorative Stainless Steel
Levers on Round Rosette

Article Number:

LHU-RR-1551

Dimensions:

Length: 130mm



* All handles are of AISI Grade 304

Decorative Levers

Stainless Steel Levers on Square Rosette

Part Description:

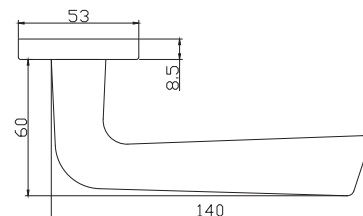
Decorative Stainless Steel
Levers on Square Rosette

Article Number:

LHU-SR-1520

Dimensions:

Length: 140mm



Part Description:

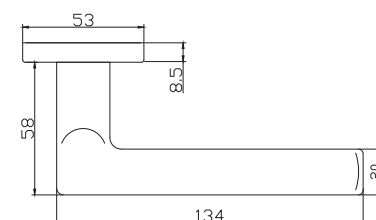
Decorative Stainless Steel
Levers on Square Rosette

Article Number:

LHU-SR-1503

Dimensions:

Length: 134mm



Part Description:

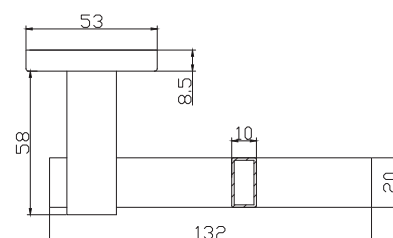
Decorative Stainless Steel
Levers on Square Rosette

Article Number:

LHU-SR-1542

Dimensions:

Length: 132mm



Part Description:

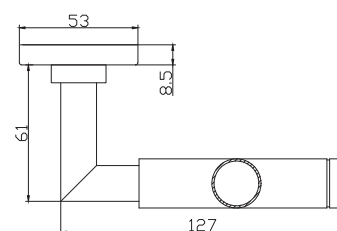
Decorative Stainless Steel
Levers on Square Rosette

Article Number:

LHS-SR-2053

Dimensions:

Length: 127mm



* All handles are of AISI Grade 304

Decorative Levers

Stainless Steel Levers on Square Rosette

Part Description:

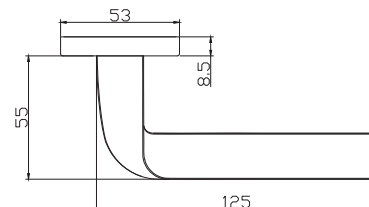
Decorative Stainless Steel
Levers on Square Rosette

Article Number:

LHS-SR-2183

Dimensions:

Length: 125mm



Part Description:

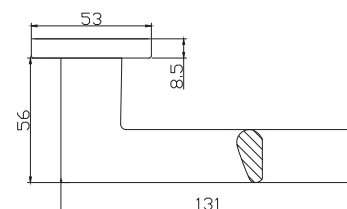
Decorative Stainless Steel
Levers on Square Rosette

Article Number:

LHS-SR-2185

Dimensions:

Length: 131mm



Part Description:

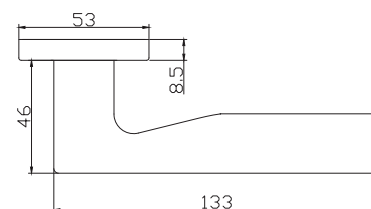
Decorative Stainless Steel
Levers on Square Rosette

Article Number:

LHS-SR-2186

Dimensions:

Length: 133mm



* All handles are of AISI Grade 304

Handle Sets on Plate

Lever Handle on Long Plate

Specifications:

- Stainless steel grade 304 lever and plate
- Sprung lever Ø19mm
- Plate size 245x45x10mm
- Plate to suit 72mm or 85mm locks

Features:

- Non handed - suitable for left or right hand door
- Fixings to suit door thickness 35-55mm
- Other lever designs possible
- Brushed satin finish as standard

Product code	Finish
LHT-LP-1001-72-SSS	Stain stainless steel
LHT-LP-1001-85-SSS	Stain stainless steel



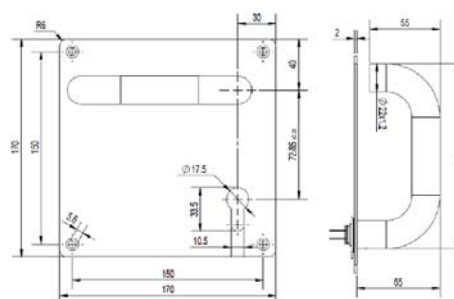
Lever Handle on Square Plate

Specifications:

- Stainless steel grade 304 lever and plate
- Sprung lever Ø22mm
- Plate size 170x170x2mm
- Standard plate for 85mm centre size locks

Features:

- Non handed - suitable for left or right hand door
- Suits door thickness 35-55mm
- Variant for 72mm centre size locks on request
- Brushed satin finish as standard



Product code	Finish
LHT-SP-1001-85-SSS	Stain stainless steel



DOORS CONTROLS

Overhead Door Closer

Power Size 3

Application

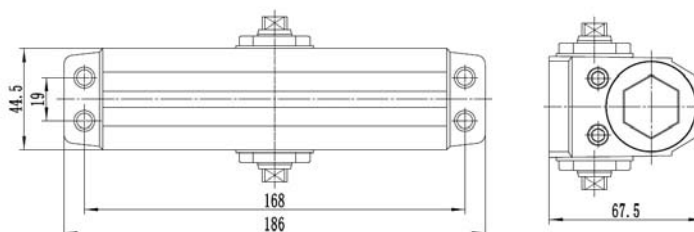
- For wood and metal doors
- Suitable for fire resistant doors

Specification

- Overhead door closer
- Heavy duty cast aluminium body
- Hydraulic, rack and pinion system
- Fixed power size 3 suits doors 40 - 60 kgs, door width 950mm

Features

- Adjustable closing and latching speed
- Non handed installation
- Standard, top jamb and parallel arm installation
- Parallel arm bracket optional accessory
- CE certified and UL listed



EN 1154:1996 / A1:2002 / AC:2006

3	8	3	1	1	3
---	---	---	---	---	---

Product code	Power Size	Finish
DC-1203-SIL	3	Silver painted



FIRE

Overhead Door Closer

Selectable Power Size 2 / 3 / 4

Application

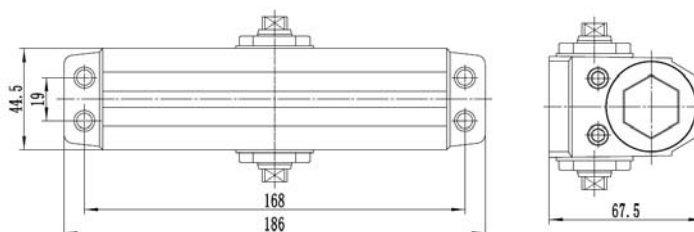
- For wood and metal doors
- Suitable for fire resistant doors

Specification

- Overhead door closer
- Heavy duty cast aluminium body
- Hydraulic, rack and pinion system
- Selectable power 2/3/4 (by position on door) suits doors 40-80 Kgs, door width 1100mm

Features

- Adjustable closing and latching speed
- Non handed installation
- Standard, top jamb and parallel arm installation
- Parallel arm bracket optional accessory
- CE and UL certified for use on fire resistant doors



EN 1154:1996 / A1:2002 / AC:2006

3	8	3	1	1	3
---	---	---	---	---	---

Product code	Power Size	Finish
DC-3234-SIL	2 / 3 / 4	Silver painted



Overhead Door Closer

Adjustable Power

Application

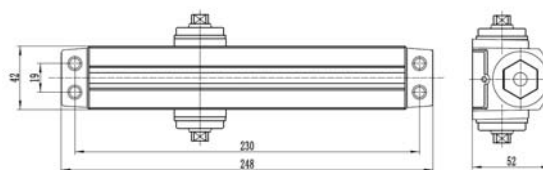
- For wood and metal doors
- Suitable for fire resistant doors

Specification

- Overhead door closer
- Heavy duty cast aluminium body
- Hydraulic, rack and pinion system
- Adjustable power EN 2-4 suits doors 40 - 80 kgs, door width 1100mm
- Adjustable backcheck and delayed action

Features

- Adjustable closing and latching speed
- Non handed installation
- Standard, top jamb and parallel arm installation
- Parallel arm bracket optional accessory
- Full plastic cover as standard optional electroplated cover, arm and PA bracket kit



EN 1154:1996 / A1:2002 / AC:2006

3	8	$\frac{4}{2}$	1	1	2
---	---	---------------	---	---	---

Product code	Power Size	Finish
DC-4024-C-SIL	Adjustable EN size 2-4	Silver
DC-KIT-4024-SN	Metal Cover Kit	Satin Nickel



Overhead Door Closer

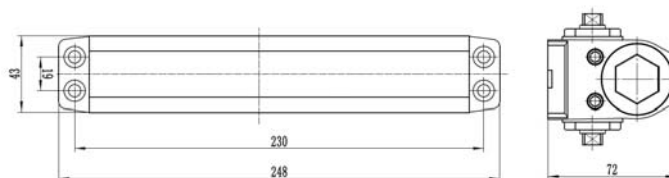
Power Size 4

Application

- For wood and metal doors
- Suitable for UL certified fire resistant doors

Specification

- Overhead door closer
- Heavy duty cast aluminium body
- Hydraulic, rack and pinion system
- Fixed power size 4 suits doors 60 - 80 kgs, door width 1100mm



Features

- Adjustable closing and latching speed
- Non handed installation
- Standard, top jamb and parallel arm installation
- Includes slim plastic cover as standard
- Parallel arm bracket optional accessory

Product code	Power Size	Finish
DC-1004-C-SIL	4	Silver



Overhead Door Closer

Power Size 5

Application

- For wood and metal doors
- Suitable for UL certified fire resistant doors

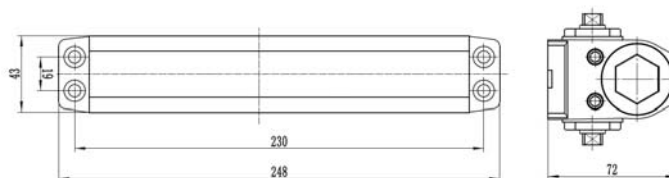
Specification

- Overhead door closer
- Heavy duty cast aluminium body
- Hydraulic, rack and pinion system
- Fixed power size 5 suits doors 80 - 100 kgs, door width 1250mm



Features

- Adjustable closing and latching speed
- Non handed installation
- Standard, top jamb and parallel arm installation
- Includes slim plastic cover as standard
- Parallel arm bracket optional accessory



Product code	Power Size	Finish
DC-1005-C-SIL	5	Silver Painted



Overhead Door Closer

Adjustable Power Size 1 - 6

Application

- For wood and metal doors



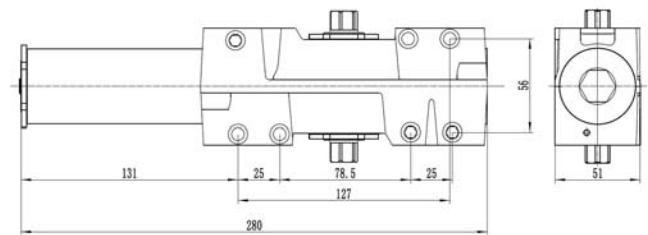
Specification

- Heavy duty overhead door closer
- Heavy cast aluminium body
- Hydraulic, rack and pinion system
- Valve adjustable power size 1-6 suits doors upto 120 kgs, door width 1400mm
- Barrier free, lower opening resistance
- UL certified for use on fire resistant doors



Features

- Adjustable closing and latching speed
- Adjustable back check function as standard
- Non handed installation
- Standard, top jamb and parallel arm installation
- Parallel arm bracket optional accessory
- Include slim plastic cover
- Optional metallic finishes and matching arm kit



Product code	Power Size	Finish
DC-7016-C-SIL	Adjustable 1 - 6	Silver
DC-KIT-716-SN	Metal Cover Kit	Satin Nickel



Concealed Door Closer

Power Size 3

Application

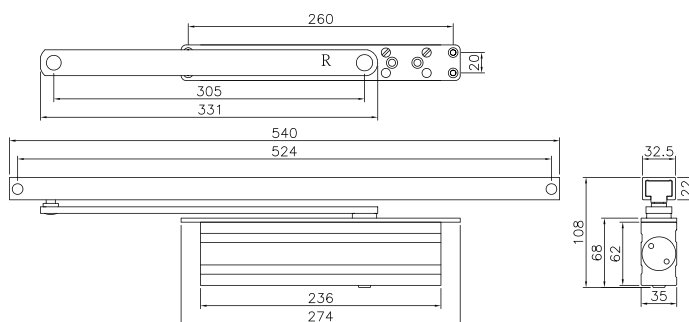
- For wood or metal doors
- Suitable for fire resisting doors

Specification

- Concealed overhead door closer
- Rack and pinion mechanism
- Sliding track arm with built in cushion limit stay
- Fixed power size EN 3 suits doors 40 - 60 kgs, door width upto 950mm
- Maximum opening angle 105°

Features

- Adjustable closing and latching speed
- Non handed installation
- Reversible hold open function (optional)
- EN1154 / CE certified
- Silver finish as standard - other colours on request



Product code	Power Size	Finish
T660-SIL	3	Silver painted



FIRE

Concealed Door Closer

Adjustable Power Size 2-4

Application

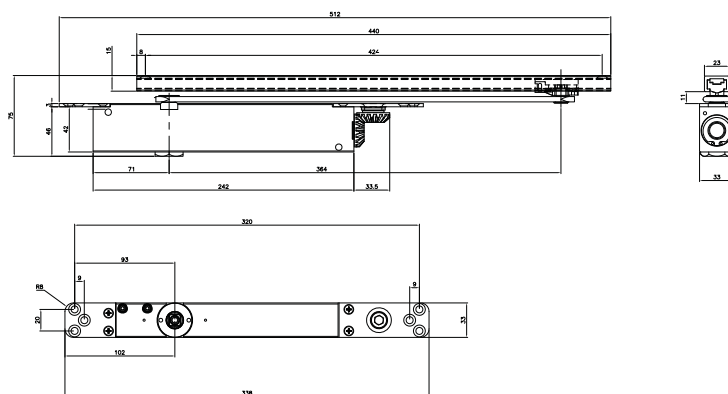
- For wood or metal doors
- Suitable for fire resisting doors

Specification

- Concealed overhead door closer
- Cam action mechanism
- Sliding track arm with built in cushion limit stay
- Adjustable power size EN 2-4 suits doors 40 - 80 kgs, door width upto 1100mm
- Maximum opening angle 120°

Features

- Adjustable closing and latching speed
- Non handed installation
- Reversible hold open function (optional)
- EN1154 / CE certified
- Silver finish as standard - other colours on request
- Cam action requires smaller opening force suitable for public building installations



Product code	Power Size	Finish
T96G-SIL	2-4	Silver painted



Track Arm

Specification

- Suits door closer DC-4024
- For wood or metal doors
- Built in adjustable hold open device

Features

- Non handed installation
- Silver Finish
- Not suitable for fire resistant doors
- Track arm installation reduces power by one size

Product code	Finish
DC-STA-4024-SIL	Silver



Track arm with DC-4024

Parallel Arm Brackets

Specification

- For push side installation
- Optional accessory ordered separately
- Silver finish as standard

Product code	Suits Closer Ref.	Finish
DC-PAB-1045-SIL	DC-1004 / DC-1005	Silver
DC-PAB-3234-SIL	DC-3234	Silver
DC-PAB-4024-SIL	DC-4024	Silver
DC-PAB-7016-SIL	DC-7016	Silver



PAB-1045



PAB-3234



PAB-4024

Door Coordinators

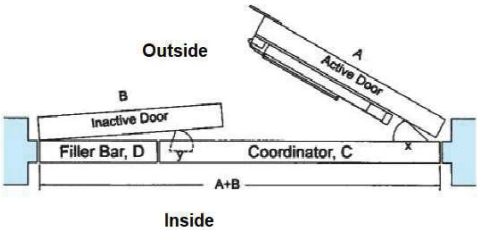
Specification

- Automatic coordinating device for sequential closing of double doors
- Steel material
- Length options to suit door sets of different widths



Features

- Aluminium finish
- Suitable for use on UL certified doors
- Matching filler bars used to close gaps



Door Coordinators		
Product Ref	Length	
C6042	42"	1067mm
C6052	52"	1321mm
C6060	60"	1524mm

Filler Bars		
Product Ref	Length	
F6018	18"	457mm
F6020	20"	508mm
F6048	48"	1219mm





ACCESSORIES

Door Stop - Floor Mounting

Half Moon

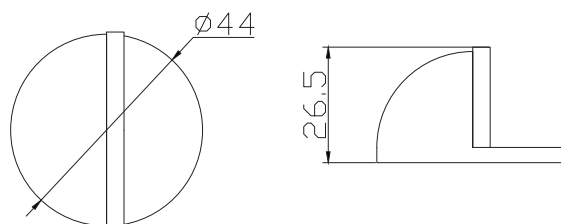
Specification

- Stainless steel AISI Grade 304
- Half moon designs with 3mm rubber cushion
- Size Ø44 x 26.5mm
- Anchor pin and fixing screw

Features

- Brushed satin finish, other finishes on request

Product code	Finish
SX-DS-7004-SSS	Satin stainless steel



Door Stop - Floor Mounting

Cylindrical

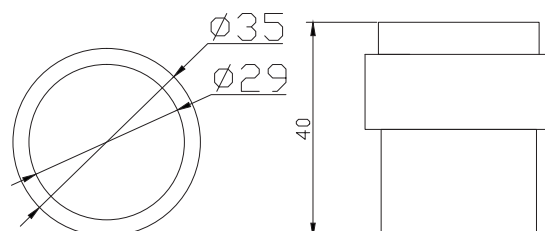
Specification

- Stainless steel AISI Grade 304
- Cylindrical design
- Size 40mm x Ø29 / 35mm
- Concealed fixing

Features

- Brushed satin finish, other finishes on request

Product code	Finish
SX-DS-7001-SSS	Satin stainless steel



Door Stop - Wall Mounting

Round Rose

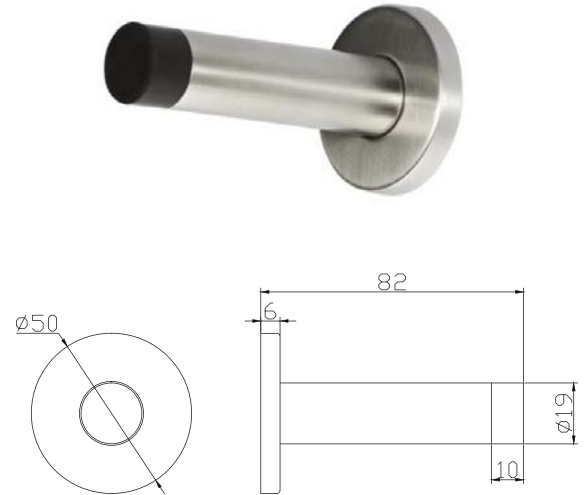
Specification

- Stainless steel AISI Grade 304
- Tube designs with 10mm rubber cushion
- Size Ø19 x 82mm
- Concealed fixing

Features

- Brushed satin finish, other finishes on request

Product code	Finish
SX-DS-7010-SSS	Satin stainless steel



Door Stop - Wall Mounting

Square Rose

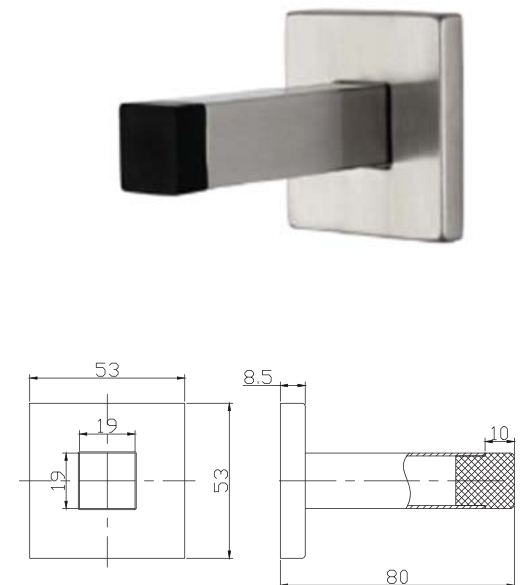
Specification

- Stainless steel AISI Grade 304
- Tube designs with 10mm rubber cushion
- Size 19 x 80mm
- Concealed fixing

Features

- Brushed satin finish, other finishes on request

Product code	Finish
SX-DS-7011-SSS	Satin stainless steel



Flush Bolt for Metal Door

Specification

- Stainless steel AISI Grade 304 body
- Steel rod and bolt
- Face plate 172mm x 24.5mm x 2.5mm
- Length 12"

Features

- Brushed satin finish

Product code	Size	Finish
SX-FB-5027-UL-SSS	12"	Satin stainless steel



Flush Bolt for Wood Door

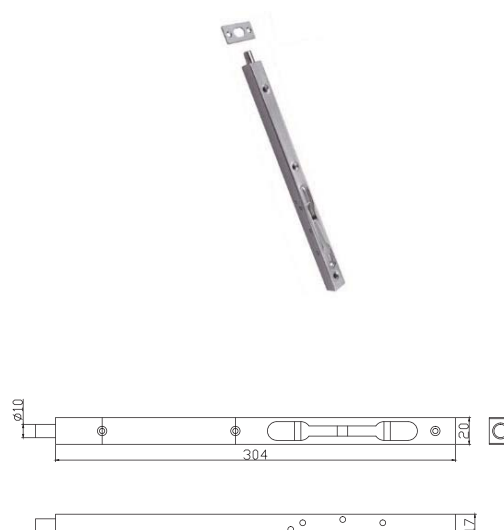
Specification

- Stainless steel AISI Grade 304
- 20x17mm box casing, Ø10mm bolt with lever operation
- Length 8" (204mm) or 12" (304mm)

Features

- Brushed satin finish, other finishes on request

Product code	Size	Finish
SX-FB-5002-08-SSS	8"	Satin stainless steel
SX-FB-5002-12-SSS	12"	Satin stainless steel



Coat Hook with Buffer

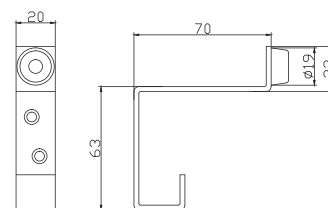
Specification

- Stainless steel AISI Grade 304
- Size 70mm x 63mm x 20mm

Features

- Rubber buffer
- Brushed satin finish, other finishes on request

Product code	Description	Finish
SX-ML-9043-SSS	Coat hook with buffer	Satin stainless steel



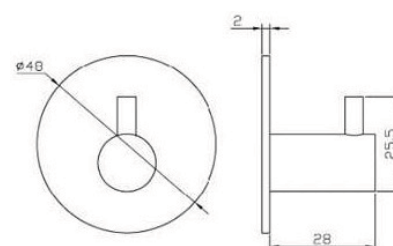
Coat Hooks - Slim Line

Specification

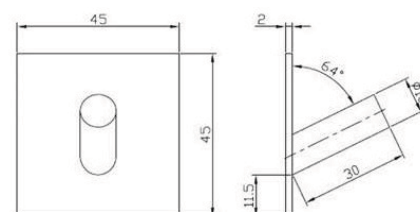
- Stainless steel AISI Grade 304
- Circular and square designs

Features

- Aesthetic slim profile
- Brushed satin finish, other finishes on request
- 3M adhesive pad fixing (included)
- Also available as combination with 2 or 3 hooks



SX-ML-1101-01-SSS



SX-ML-1092-01-SSS

Product code	Description	Finish
SX-ML-1101-01-SSS	Slim coat hook	Satin stainless steel
SX-ML-1105-01-SSS	Slim coat hook	Satin stainless steel
SX-ML-1090-01-SSS	Round coat hook	Satin stainless steel
SX-ML-1092-01-SSS	Square coat hook	Satin stainless steel

Bathroom Indicator and Turn Set

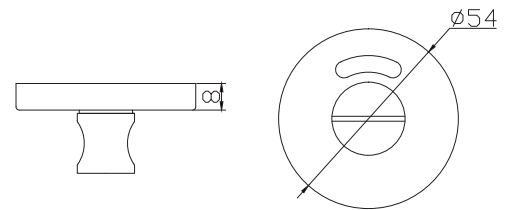
Specification

- Privacy indicator and turn set
- Stainless steel AISI Grade 304
- Size Ø54 x 8mm, with 8x8mm spindle
- Red-green indicator on outside part



Features

- Brushed stain stainless steel finish



Product code	Finish
SX-WCR-4011-SSS	Stain stainless steel

Mortice Deadbolt for Privacy set

Specification

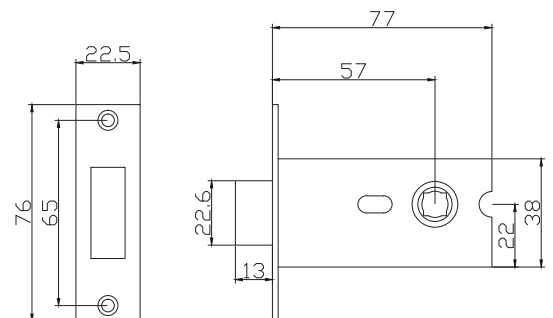
- Mortice deadbolt
- Square follower for 8x8mm spindle
- Stainless steel front and strike plate



Features

- Brushed stain stainless steel finish

Product code	Finish
SX-WCR-4101-SSS	Stain stainless steel



Circular Signage

Specification

- Stainless steel AISI Grade 304
- Size Ø 76mm x 1.5mm

Features

- Satin stainless steel finish

Product code	Description
SX-SP-3101-MC-SSS	Male sign
SX-SP-3102-FC-SSS	Female Sign
SX-SP-3103-HC-SSS	Disabled sign
SX-SP-3104-BC-SSS	Baby Change sign
SX-SP-3011-SH-SSS	Push sign
SX-SP-3012-LL-SSS	Pull sign



Rectangular Plates

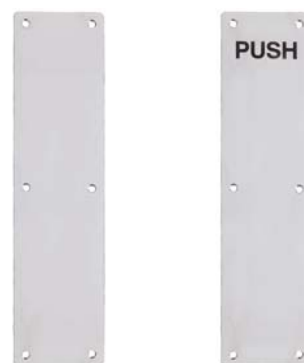
Specification

- Stainless steel AISI Grade 304
- Size 300mm x 100mm x1.5mm

Features

- Satin stainless steel finish
- Radius corners

Product code	Description
SX-SP-3311-FP-SSS	Blank finger plate
SX-SP-3312-SH-SSS	"PUSH" plate



Euro Cylinder Escutcheon

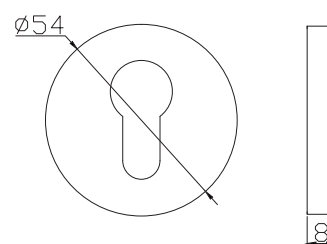
Specification

- Stainless steel AISI Grade 304
- Size Ø54 x 8mm

Features

- Brushed satin finish, other finishes on request
- Wood fixings included

Product code	Description	Finish
SX-ECR-6006-CE-SSS	Escutcheons	Satin stainless steel



Euro Cylinder Pull

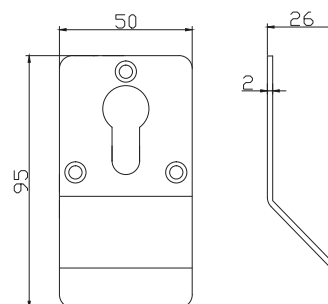
Specification

- Stainless steel AISI Grade 304
- Size 50mm x 95mm x 2mm

Features

- Satin stainless steel finish
- Profile depth 26mm

Product code	Description	Finish
SX-ECP-6001-SSS	Cylinder pull	Satin stainless steel



Door Guard

Specification

- Cast zinc alloy door guard
- Allows door opening to 100mm (4")

Features

- Satin nickel finish as standard, other finishes on request
- Supplied with wood fixings



Product code	Finish
SX-DG-19050-SN	Satin nickel

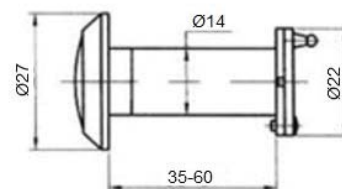
Door Viewer

Specification

- Brass housing with glass lens and cover
- Adjustable for door thickness 35-57mm

Features

- Satin nickel finish as standard, other finishes on request



Product code	Finish
SX-DV-180-GL-SN	Satin nickel

Flush Turn Handle

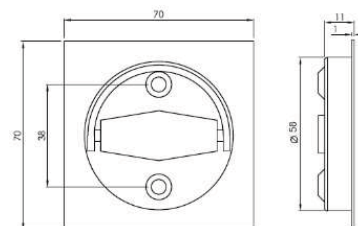
Specification

- Stainless steel AISI Grade 304
- Spindle size 8x8mm

Features

- Satin stainless steel finish

Product code	Finish
SX-FH-S070-02-SSS	Satin stainless steel



Mortice Latch

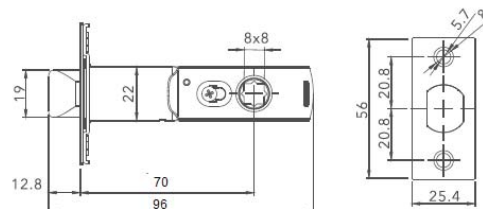
Specification

- Galvanized steel casing
- Brass latch
- Stainless steel front and strike plate
- Follower 8x8mm

Features

- Satin stainless steel finish

Product code	Finish
SX-ML-0040-70-SSS	Satin stainless steel



Mortice Security Bolt

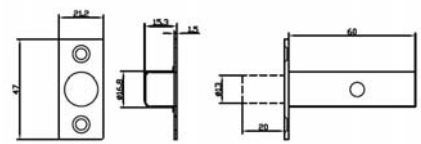
Specification

- Security bolt with star key
- Stainless steel front and strike plate
- Mortice depth 60mm

Features

- Brushed satin stainless steel finish

Product code	Finish
SX-ML-9003-SSS	Satin stainless steel



Roller Latch

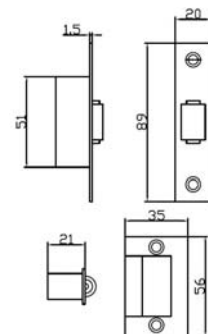
Specification

- Roller latch
- Stainless steel AISI Grade 304

Features

- Brushed satin stainless steel finish

Product code	Finish
SX-ML-9002-SSS	Satin stainless steel



Magnetic Door Holder

Specification

- Stainless steel AISI Grade 304
- "Half moon" designs with 3mm rubber cushion
- Size Ø44 x 26mm
- Anchor pin and fixing screw

Features

- Brushed satin finish, other finishes on request



Product code	Finish
SX-DSM-7503-SSS	Satin stainless steel

Magnetic Door Holder

Specification

- Stainless steel AISI Grade 304
- "Paw" design
- Size Ø45 x 75mm, door part Ø33 x 20mm
- Concealed fixing

Features

- Brushed satin finish, other finishes on request
- Can be mounted on floor or wall



Product code	Finish
SX-DSM-7505-SSS	Satin stainless steel

Blind Rosette

Specification

- Stainless steel AISI Grade 304
- Size Ø54 x 8mm

Features

- Brushed satin finish, other finishes on request
- Through fixings included



Product code	Description	Finish
SX-ECR-6005-BR-SSS	Blind rosette	Satin stainless steel
SX-ECR-6005-BR-PSS	Blind rosette	Polished stainless steel

Door Pull

Specification

- Stainless steel AISI Grade 304
- Size 50mm x 95mm x 2mm

Features

- Satin stainless steel finish
- Profile depth 26mm



Product code	Description	Finish
SX-EBP-6002-SSS	Door pull	Satin stainless steel

Bathroom Set with Long Turn

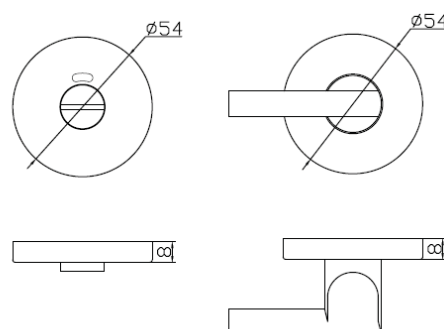
Specification

- Privacy indicator with long turn
- Stainless steel AISI Grade 304
- Size Ø54 x 8mm, with 8x8mm spindle
- Red-green indicator on outside part

Features

- Brushed satin stainless steel finish

Product code	Finish
SX-WCR-4018-SSS	Satin stainless steel



Flush Bolt

For Metal Door

Specification

- Solid brass body
- Steel rod and bolt
- Face plate 172mm x 24.5mm x 3mm
- Length 12"

Features

- Brushed satin steel finish
- Suitable for use on UL and CE certified doors

Product code	Size	Finish
FB100	12"	US32D



Flush Bolt

For Wooden Door

Specification

- Brass body
- Face plate 172mm x 25.4mm x 3mm
- Bolt throw 22mm (7/8"), Ø13mm (1/2")
- Minimum mortice depth 29mm (1 1/8")

Features

- Brushed satin steel finish
- Suitable for use on UL certified fire resistant doors

Product code	Size	Finish
FB100W	6 3/4"	US32D



Automatic Flush Bolt

For Metal Door

Specification

- Stainless steel face plate
- Face plate 172mm (6 3/4") x 25.4mm (1") x 3mm
- Bolt throw 19mm (3/4")

Features

- Brushed satin steel finish
- Normally installed on top and bottom of inactive leaf
- Suitable for use on UL and CE certified fire resistant metal doors

Product code	Size	Finish
FB620M	12"	US32D



Automatic Flush Bolt

For Wooden Door

Specification

- Stainless steel face plate
- Face plate 216mm (8 1/2") x 25.4mm (1") x 3mm
- Bolt throw 22mm (7/8"), Ø13mm (1/2")
- Minimum mortice depth 51mm (2")

Features

- Brushed satin steel finish
- Normally installed on top and bottom of inactive leaf
- Suitable for use on UL and CE certified fire resistant wooden doors

Product code	Size	Finish
FB620W	8 1/2"	US32D



Dust Proof Socket

Specification

- Brass body
- Face plate 55mm x 35mm x 3mm
- Barrel Ø22mm x 36mm

Features

- Brushed satin steel finish



Product code	Finish
DP-005	US32D

Dust Proof Socket

Specification

- Stainless steel AISI Grade 304
- Suitable for bolts up to Ø13mm
- Size Ø19 x 40mm

Features

- Brushed satin finish, other finishes on request

Product code	Finish
SX-DP-5002-SSS	Satin stainless steel





PULL HANDLE

Pull Handle

Back to Back Fixing

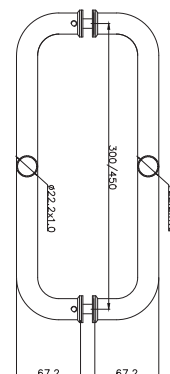
Specifications:

- Tubular stainless steel AISI Grade 304
- Size Ø22mm x 300mm centres

Features:

- Brushed satin stainless steel finish

Product code	Function
PH-BB-D300-22-SSS	Satin stainless steel

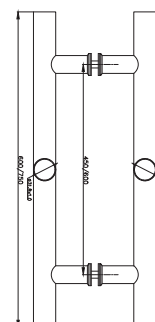


Specifications:

- Tubular stainless steel AISI Grade 304
- Size Ø32mm x 600mm, 450mm centres

Features:

- Brushed satin stainless steel finish
other finishes available on request



Product code	Function
PH-BB-T600-32-SSS	Satin stainless steel

Pull Handle

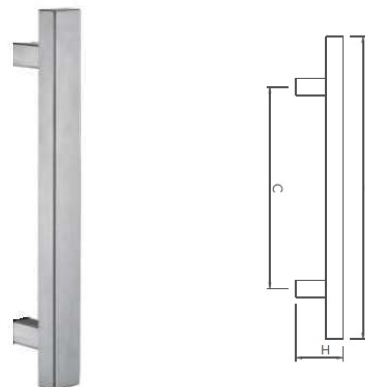
Specifications:

- Tubular stainless steel AISI Grade 304
- Concealed fixing for single side installation on wood and metal* doors

Features:

- Brushed satin finish, other finishes on request
- Back to back variant also available

* door type must be specified in advance



Product code	Function
PH-CF-S031-25-SSS	Satin stainless steel

C	L	H
250	400	70
300	450	70
400	550	70
500	650	70

*all above dimensions in mm

Pull Handle

Back to Back Fixing

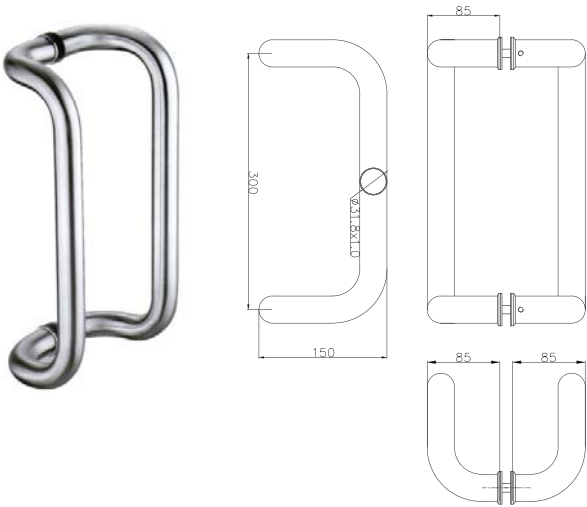
Specifications:

- Tubular stainless steel AISI Grade 304
- Size Ø32mm x 300mm centres

Features:

- Brushed satin stainless steel finish

Product code	Function
PH-BB-D300-32-SSS	Satin stainless steel



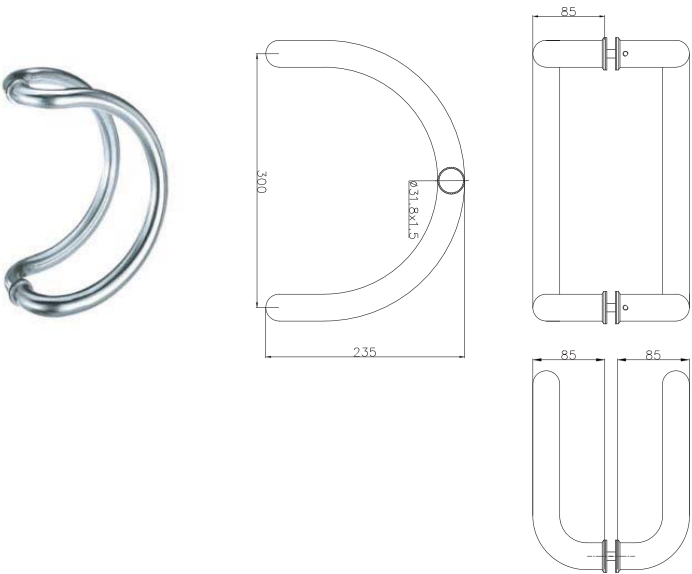
Specifications:

- Tubular stainless steel AISI Grade 304
- Size Ø32mm x 300mm centres

Features:

- Brushed satin stainless steel finish

Product code	Function
PH-BB-C300-32-SSS	Satin stainless steel



Pull Handle

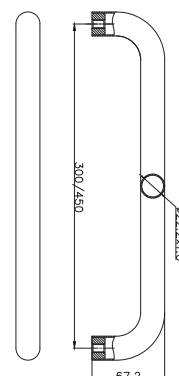
Specifications:

- Tubular stainless steel AISI Grade 304
- Size Ø22mm x 300mm centres
- Fixing from back through the door
- Concealed fixing* also available

Features:

- Brushed satin stainless steel finish

Product code	Function
PH-BF-D300-22-SSS	Satin stainless steel



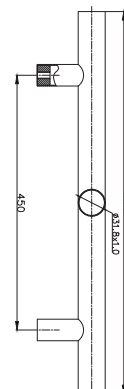
Specifications:

- Tubular stainless steel AISI Grade 304
- Size Ø32mm x 450mm centres
- Fixing from back through the door
- Concealed fixing* also available

Features:

- Brushed satin stainless steel finish

Product code	Function
PH-BF-T450-32-SSS	Satin stainless steel



*Fixing type and door material must be confirmed

Pull Handle on Plate

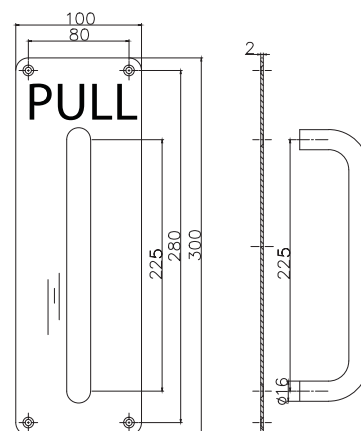
Specifications:

- Stainless steel AISI Grade 304
- Tubular pull handle Ø19mm x 225mm
- Plate 300mm x 100mm x 2mm, radius corners

Features:

- Brushed satin stainless steel finish
other finishes available on request

Product code	Function
PH-P-3010-PULL-SSS	Satin stainless steel





EMERGENCY EXIT DEVICES

Push Bar Exit Device

Single Locking Point

Application

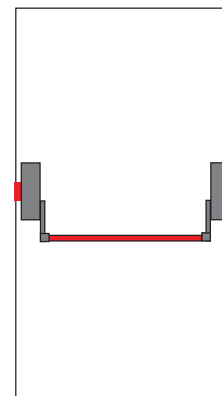
- For emergency and fire resistant exit doors
- Suitable for wood and metal, single or double door set

Specification

- Push bar exit hardware with single locking point
- Certified to European standard EN1125:2008
- Tested to 200,000 cycles
- Powder coated paint finish
- Optional lockable outside access handle

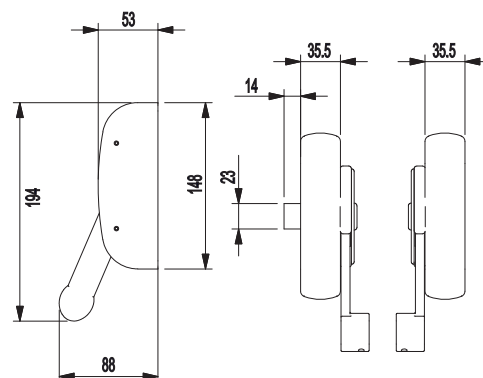
Features

- Reversible for right or left hand doors
- Bar standard length 950mm other sizes of bar and rods available on request
- Silver / red finish as standard other colours available on request



EN 1125:2008 classification

3	7	7	B	1	4	2	2	B	A
---	---	---	---	---	---	---	---	---	---



Product code	Size	Finish
401/1G7/VEK	Pushg bar set, single point	Silver
1100/V1/R	Bar 950mm	Red



EN 1125:2008



FIRE

Touch Bar Exit Device

Single locking points

Application

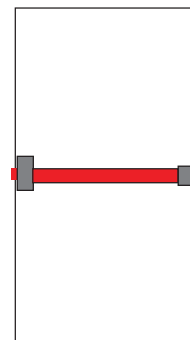
- For emergency and fire resistant exit doors
- Suitable for wood and metal, single or double door set

Specification

- Touch bar exit hardware with single locking points
- Certified to European standard EN1125:2008
- Tested to 200,000 cycles
- Powder coated paint finish
- Optional locable outside access handle

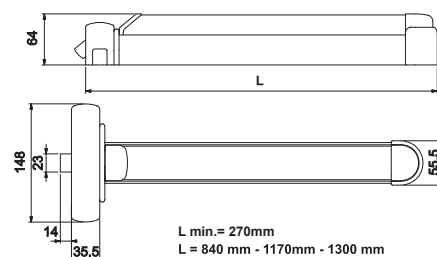
Features

- Reversible for right or left hand doors
- Touch bar standard length 840mm other sizes of bar and rods available on request
- Silver finish as standard other colours available on request



EN 1125:2008 classification

3	7	7	B	1	4	2	2	B	A
---	---	---	---	---	---	---	---	---	---



Product code	Size	Finish
601/1G7/VEK	Touch bar, 840mm, single point	Silver
601/2G7/VEK	Touch bar, 1170mm, single point	Silver



EN 1125:2008



FIRE

Touch Bar Exit Device

With 2 locking points

Application

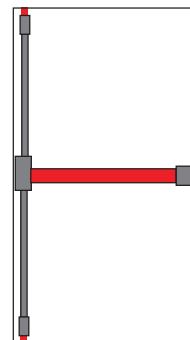
- For emergency and fire resistant exit doors
- Suitable for wood and metal, single or double door set

Specification

- Touch bar exit hardware with 2 vertical locking points
- Certified to European standard EN1125:2008
- Tested to 200,000 cycles
- Powder coated paint finish
- Vertical latches and rods kit to match
- Optional lockable outside access handle

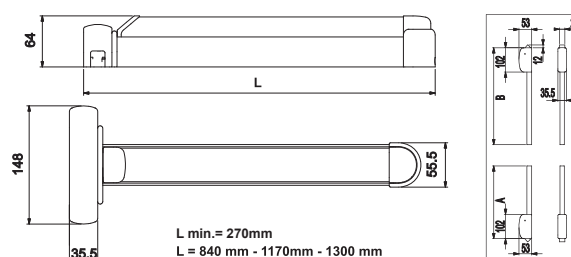
Features

- Reversible for right or left hand doors
- Touch bar standard length 840mm
- Vertical latch kit standard height 2635mm
longer sizes available on request
- Standard colour silver additional colours
possible on request



EN 1125:2008 classification

3	7	7	B	1	4	2	2	B	A
---	---	---	---	---	---	---	---	---	---



Product code	Size	Finish
602/1G7/VEK	Touch bar two points, 840mm	Silver
450/TG7/VEK	Vertical rod and latch kit	Silver



EN 1125:2008



FIRE

Outside Access Handle

Application

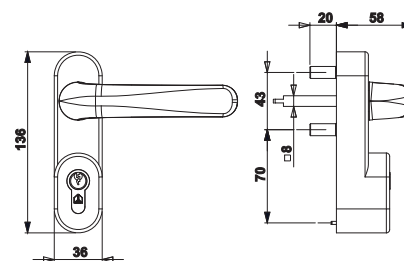
- For use with emergency exit devices
- Suitable for wood and metal door sets

Specification

- Zinc alloy die cast handle
- Lever operation locked and unlocked by cylinder
- Powder coated paint finish
- Standard single cylinder with 3 keys

Features

- Reversible for right or left hand doors
- Silver colour as standard other colours available on request
- Suitable for 600 series touchbar and 400 series push bar exit devices



Product code	Size	Finish
1090/G7/VEK	Outside access handle	Silver

Electric Outside Access Handle

Application

- For use with emergency exit devices on doors where access control is required
- Suitable for wood and metal door sets

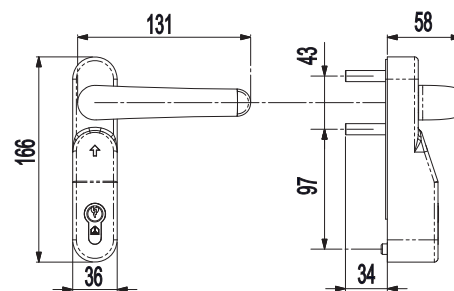
Specification

- Electrified outside handle
- 12/24V AC/DC 1A auto select power supply
- Adjustable* timed opening 3-20 seconds
- LED and audible signal on opening
- Serial interface for connection to access control system
- Reversible lever is "idle" when not in use
- Zinc alloy die cast handle and body
- Powder coated paint finish
- Cylinder operation in case of power loss



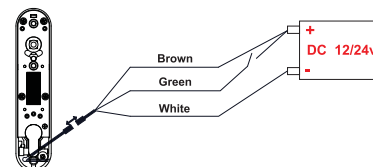
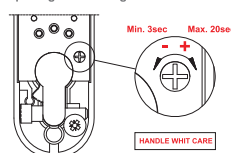
Features

- Suits 400 and 600 series exit hardware with 1, 2 or 3 locking points
- Reversible for right or left hand doors
- Standard colour silver (RAL 9007)



* opening timing must be set before installation

Opening time setting



Product code	Size	Finish
1095/G7/VEK	Electric outside access handle	Silver (RAL 9007)

Product code		Min. Value	Standard	Max. Value
Power Supply	V-AC	-10%	12....24	-10%
	V-DC	-10%	12....24	-15%
Standby Power Consumption	mA		22	35
Peak Power Consumption	mA		1100	1200
Holding Current	mA (DC)		160	
Current Draw in Hold Open Mode	mA (DC)		130	

Touch Bar Exit Devices

Single Point Mortice Lock

Application

- For emergency and fire resistant doors
- Suitable for wood and metal, single door set

Specification

- Touch bar exit hardware with single point mortice lock
- Certified to European standard EN1125:2008
- Tested to 200,000 cycles
- Powder coated paint finish

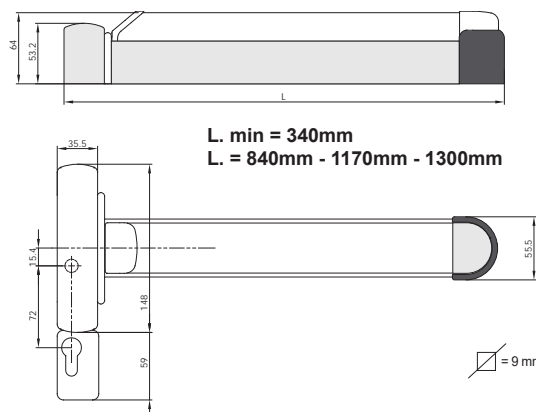
Features

- Reversible for right or left hand doors
- Touch bar standard length 840mm
other sizes of bar and rods available on request
- Standard colour grey (RAL 9006)
other colours available on request
- Optional outside access handle



EN 1125:2008 classification

3	7	7	B	1	4	2	2	B	A
---	---	---	---	---	---	---	---	---	---



Product code	Size	Finish
711K/1G7/VEK	Touch bar kit with mortice lock	Silver
1082	Outside handle	Black (painted)



EN 1125:2008



FIRE

Touch Bar Exit Device

Two Point Mortice Lock

Application

- For emergency and fire resistant exit doors
- Suitable for metal double door set

Specification

- Touch bar exit hardware with two point mortice lock
- Certified to European standard EN1125:2008
- Tested to 200,000 cycles
- Powder coated paint finish
- Suits door height of 2100mm

Features

- Reversible for right or left hand doors
- Touch bar standard length 840mm
other sizes of bar and rods available on request
- Silver painted other colours available on request

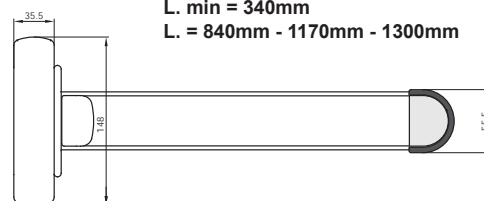


EN 1125:2008 classification

3	7	7	B	1	4	2	2	B	A
---	---	---	---	---	---	---	---	---	---



L. min = 340mm
L. = 840mm - 1170mm - 1300mm



Product code	Size	Finish
712K/1G7/VEK	Touch bar mortice kit with two locking points	Silver



EN 1125:2008



FIRE



ELECTRO-MECHANICAL

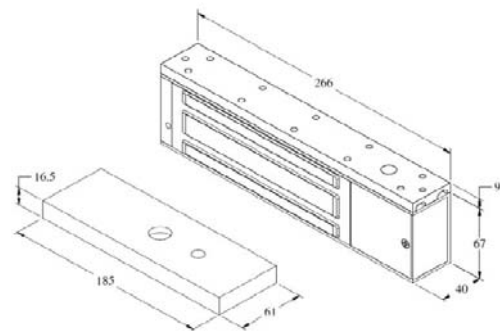
Electro Magnetic Locks

Fire Rated - 1200

Specification and Features

- 545 kgs (1200 lbs) holding force
- Selectable 12 / 24V
- Lock status monitoring, built in bond sensor
- Current drain
 - 420mA +/-10% / 12V DC
 - 210mA +/-10% / 24V DC
- UL 10B / 10C fire certified
- Operating temperature -10°C to +55°C
- LED light
- Brushed anodized aluminium finish

Product code	Finish
ULC-545-SL-A	Brushed anodized aluminium

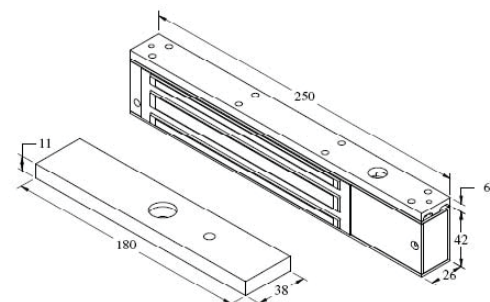


Fire Rated - 600

Specification and Features

- 275 kgs (600 lbs) holding force
- Selectable 12 / 24V
- Lock status monitoring, built in bond sensor
- Current drain
 - 420mA +/-10% / 12V DC
 - 210mA +/-10% / 24V DC
- UL 10B / 10C fire certified
- Operating temperature -10°C to +55°C
- LED light
- Brushed anodized aluminium finish

Product code	Finish
ULC-275-SL-A	Brushed anodized aluminium



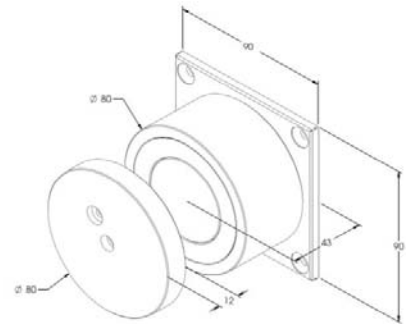
Electro Magnetic Door Holder

Specification and Features

- 200 kgs (450 lbs) holding force
- Selectable DC12 / 24V
- Current drain
 - 220mA +/-10% / 12V DC
 - 110mA +/-10% / 24V DC
- Operating temperature -10°C to +55°C
- Magnet Ø80 x 43mm
- Armature Ø80 x 12mm



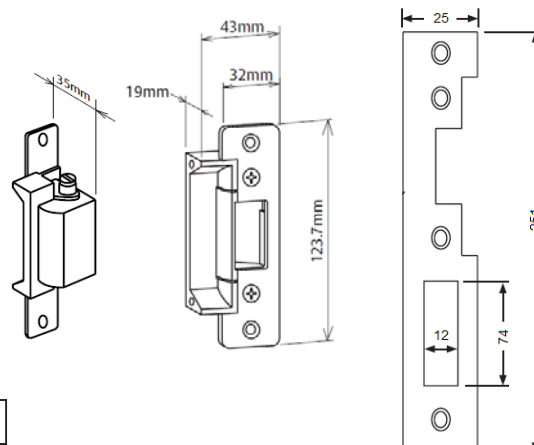
Product code	Finish
REL-80-200D	Brushed anodized aluminium



Electric Strike

Specification and Features

- Field interchangeable - fail safe / fail secure
- Selectable DC12 / 24V
- Current drain
 - 250mA at 12V DC
 - 125mA at 24V DC
- Solenoids rated for continuous use
- Static holding force of 680kgs
- Stainless steel keeper and face plate
- Suits latches of 18mm with 3mm door gap
- Tested to 1 million cycles
- Non-monitored
- Fire rated to 4 hrs. - Australian Standard AS1905.1.2005
- Operating temperature -20°C to +60°C
- Weather resistant IP56
- Optional lip extensions
- Optional DIN style face plates to suit European sash locks



Product code	Description	Finish
ES100111-060M	Standard lipped strike	SSS
ES110111-150M	Lipless strike	SSS
ES-LP-X110-SSS	Face plate for European sash lock	SSS

Exit Switches

Specification and Features

- Stainless steel faceplate
- Normally Open and Normally closed output
- No power required to operate
- Square or slim design



EMX-EBP-B02A



EMX-EBP-S01A

Product code	Description	Finish
EMX-EBP-B02A	EM Switch 76x76mm	Satin stainless steel
EMX-EBP-S01A	EM Switch 76x25mm	Satin stainless steel

Fire Rated - 600

Specification and Features

- 275 kgs (600 lbs) holding force
- Selectable 12 / 24V
- Lock status monitoring, built in bond sensor
- Current drain
 - 420mA +/-10% / 12V DC
 - 210mA +/-10% / 24V DC
- UL 10B / 10C fire certified
- Operating temperature -10°C to +55°C
- LED light
- Brushed anodized aluminium finish



Product code	Description	Finish
EMX-DL-K402	Covealed door loop	Chrome